

LAND

Proper Handling of Waste Tires for Tire Dealers



Waste Tire Disposal

It is unlawful for any person to:

- dispose of waste tires at a site or facility other than a site or facility for which a permit has been issued by the DEQ.
- knowingly transport or knowingly allow waste tires under his/her control or possession to be transported to an unpermitted site or facility.

Storage of Waste Tires

As regulated in Oklahoma's Waste Tire Recycling Act, tire manufacturers, retailers, wholesalers and retreaders may store up to 2,500 waste tires at their place of business or designated off-premises storage site. Individuals can store no more than 50 waste tires.

Manifest Tracking System

It is unlawful for any person to remove more than ten used tires from a tire dealer's possession, or to transport more than ten used tires in Oklahoma, unless a manifest form, approved by the DEQ, which documents the removal and approved disposition or sale of the tires is provided by the dealer.

A Waste Tire Compensation Manifest must be used for transportation of waste tires to a waste tire facility entitled to receive compensation from the Waste Tire Indemnity Fund.

A Waste Tire Tracking Manifest must be used for transportation of waste tires to any location other than a waste tire facility.

Within 30 days of receipt of the waste tires, a completed copy of the manifest shall be returned, by the receiving facility, to the waste tire generator. Copies of the manifest shall be maintained by the generator, transporter, and receiving facility for a 5 year period.

Beneficial Reuse of Processed Waste Tires

The state's waste tire processors are putting your waste tires to good use in the following ways:

- Tire chips for use in septic systems.
- Tire chips for use as Tire Derived Fuel (TDF) at cement kilns.
- Whole tires for use as TDF at cement kilns.
- Crumb rubber as feed stock material for the manufacturing of rubber mats and other molded products.
- Crumb rubber for use as playground material.
- Crumb rubber for use in athletic field surfaces.

Mosquito Control in Waste Tire Storage Piles

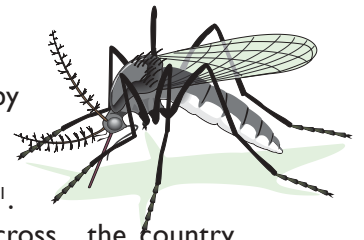
The West Nile Virus is carried by mosquitoes and can be transmitted to birds and mammals (including horses and humans)¹.

During 2002 the virus spread across the country into 41 states, and the Centers for Disease Control and Prevention attributed 43 human deaths to the virus². In Oklahoma 71 birds and 9 horses were identified as being infected with the West Nile Virus during 2002².

In order to control mosquito populations within communities across the state it has become increasingly important to eliminate or treat areas of standing water where mosquitoes prefer to lay their eggs. In particular, waste tires tend to accumulate water after periods of precipitation, and become an ideal breeding ground for mosquito populations. A 50/50 mixture of bleach and water can be sprayed into the waste tires after periods of precipitation in order to render the standing water unsuitable for mosquito reproduction.

¹www.mosquito.org/mosquito.html

²www.mosquitobuzz.com/disease/mosquitodiseases.html



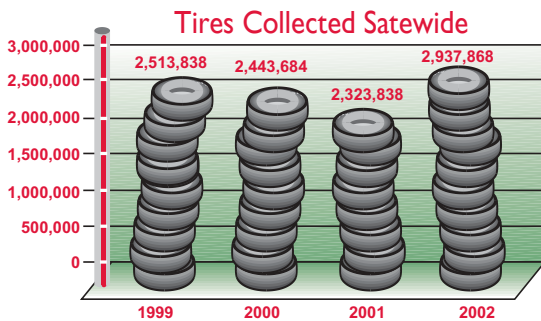
More on next page



Proper Handling of Waste Tires for Tire Dealers

Some Waste Tire Statistics

The following graph depicts the number of tires collected statewide by all waste tire processors from 1999 – 2002. During this time period 10,219,228 tires were collected.



- Oklahomans generate approximately 3.14 million waste tires annually.
- The DEQ maintains a Priority Cleanup List (PCL) of illegal tire dumps identified across the state. There are currently 99 tire dumps on the PCL together containing nearly 607,664 illegally dumped tires. Funding for cleanup of the dumps comes from tire recycling fees generated monthly.

Waste Tire Recycling Fees

When a tire is sold by a tire dealer, or when a motor vehicle is first registered in this state, the following recycling fees are to be collected as required in the “Oklahoma Waste Tire Recycling Act” (27A O.S. §2-11-401 *et seq.*):

- \$1.00/tire for tires with a rim diameter of 17.5 inches or less (passenger tire).
- \$3.50/tire for tires with a rim diameter greater than 17.5 inches (truck tire).
- \$1.00/tire for tires used on motorcycles, minibikes, motor-driven or motorized bicycles.
- No fee shall be assessed by a tire dealer for used tires or retreaded tires for which the tire dealer can document that the recycling fee has been previously paid.
- No tire dealer shall charge any customer any additional fee for the management, recycling, or disposal of any waste tire upon which the recycling fee has been remitted to the Oklahoma Tax Commission.

The Oklahoma Tax Commission (OTC)

Tire dealers and motor license agents shall remit waste tire recycling fees to the OTC utilizing the “Oklahoma Waste Tire Report” form BT-119. The worksheet is automatically provided by the OTC to those businesses/agencies collecting tire recycling fees. The worksheet can also be downloaded from the OTC’s web site @ www.oktax.state.ok.us, under Forms, Rules & Publications, then Business Forms.

Send the completed form and payment to:

Oklahoma Tax Commission
Waste Tire Remittance
P.O. Box 26850
Oklahoma City, OK 73126-0850

For assistance contact the Tax Payer Resource Center @ (405) 521-3160

DEQ contacts for waste tire inquiries:

Jim Kromer Phone: (405) 702-5219
Carol Bartlett..... Phone: (405) 702-5220
Charles Murphy Phone: (405) 702-5221

State of Oklahoma
Department of Environmental Quality (DEQ)
Land Protection Division
707 N. Robinson, P.O. Box 1677
Oklahoma City, Oklahoma 73101-1677
www.deq.state.ok.us

Waste Tire Collection Service Contacts in the State:

- **Able Tire Company** in Ada, Oklahoma.
Phone: (580) 421-9057
- **Four-D Corporation** in Duncan, Oklahoma.
Phone: (888) 272-7181
- **Frontier Recycling** in Tulsa, Oklahoma.
Phone: (888) 214-8473
- **Safe Tire Corporation** in Choctaw, Oklahoma.
Phone: (800) 621-9942

This publication is issued by the Oklahoma Department of Environmental Quality authorized by Steven A. Thompson, Executive Director. Copies have been prepared at a cost of \$0.2835 each. Copies have been deposited with the publications clearinghouse of the Oklahoma Department of Libraries. (wstires.pmd) 4/2003

