

ABSOLUTE AUCTION

SECURED PARTIES AND AREA CONTRACTORS



'06 CAT 140H AND
'02 CAT 143H

WEDNESDAY, JUNE 22, 2011 - 9:00AM
Telford, Pennsylvania (Philadelphia Area)



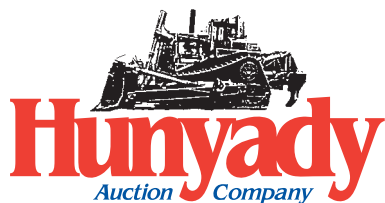
'04 CAT 321CL-CR AND '06 CAT M318C



'06 WESTERN STAR 4964



'05 PETERBILT 357



1440 COWPATH RD. • HATFIELD, PA 19440
215/361-9099 • Fax: 215/361-9212
www.hunyady.com

PRE-SORTED
FIRST CLASS MAIL
US POSTAGE
PAID
HAVERTOWN, PA
PERMIT #45





Telford, Pennsylvania (Philadelphia Area)



Notice: SunTrust Equipment Finance and Leasing Corp., along with All Points Capital Corp. and CoActiv Capital Partners, Inc. are selling assets which have been returned off-lease and/or surrendered from various accounts. Additional consignments have been accepted from area contractors. All equipment will sell at Absolute Auction, without minimums, reserves, or buyer's premium!

Location: The auction will be held at 4108 Bethlehem Pike, Telford, Pennsylvania 18969, which is located off Route 309 between Philadelphia and Allentown, Pennsylvania.

GPS Navigation: Enter cross streets of Bethlehem Pike and Central Avenue, Telford, PA. Sale site will be (100) yards North on Bethlehem Pike, on the left.

Terms: Payment in full is required on sale day by cash, certified funds, or check with a bank letter of guarantee. Sample letter of guarantee: "We hereby guarantee the payment of our customer written on his account up to \$_____ dollars for purchases at your auction sale on June 22, 2011." All guaranteed checks should be made payable to Hunyady Auction Co. Never A Buyer's Premium!

Financing: Financing is available, please contact Susan at Hunyady Auction Company for complete details.

Sales Tax: The Commonwealth of Pennsylvania requires the auction company to collect sales tax on those items considered inventory such as items consigned by lending institutions and rental companies. Sales tax will be collected at the rate of 6% and will be so noted in the sale day catalog.

Inspection: Items will be available for inspection beginning Monday, June 13th through sale day, from 8:00 a.m. until 5:00 p.m. The site will be closed Saturday and Sunday, June 18 and 19. Items may also be inspected sale day morning beginning at 7:00 a.m.

Removal: After complete payment, all sale items may be removed on sale day as long as the removal activity is not disruptive to the sale and only until 5:00 p.m. Items may also be removed Thursday, June 23, Friday, June 24 and Monday, June 27 thru Wednesday, June 29, 2011 from 8:00 a.m. until 5:00 p.m. All items must be removed no later than Thursday, June 30, 2011 at 5:00 p.m. NO EXCEPTIONS!

Special Removal Note: This location is a rented facility, on which the lease expires on June 30, 2011. Any items not removed by 5:00PM June 30, 2011 will encounter transportation fees to a local storage yard, along with daily storage fees.

Sale Site Directions: FROM PA ROUTE 309: Follow to Souderton/Route 113 Exit. Proceed to Route 113 North and follow (0.5) miles to traffic light at Bethlehem Pike. Turn left onto Bethlehem Pike and continue through 1st traffic light (Central Avenue). The sale site will be immediately on left.

Motel Information: Holiday Inn Lansdale, 1750 Summeytown Pike, Kulpville, PA 19443 (215) 368-3800 • Comfort Inn, 678 Bethlehem Pike, Montgomeryville, PA 18936 (215) 361-3600

Sale Site Phone: (800) 233-6898 • Sale Site Fax: (888) 859-8958

WALK BEHIND CONCRETE SAWS AND TRENCH COMPACTORS

TARGET Pro 65 II Walk Behind Concrete Saw • **TARGET** PAC IV Walk Behind Concrete Saw, s/n 280519 • **2000 RAMMAX** RW1404 Trench Compactor • **1989 RAMMAX** P33/24 Trench Compactor

LANDSCAPE AND LAWN MAINTENANCE EQUIPMENT



ZERO TURN MOWERS

• **ENCORE** Pro 60 Mower, Briggs & Stratton 18HP, belt drive, pull start, and 60" deck • **RYAN** Sod Cutter, Briggs & Stratton 6HP gas • **ECHO** EA-500 Gas Powered Post Hole Digger, with 8" bit • **MIKASA** Plate Compactor, Honda 5.5HP, with water tank • **ECHO** Gas Power Drill, 1/2" chuck, 3" bit • (100+/-) 40# Bags Jet-Spray Hydroseed Fiber Mulch • Gator Watering Bags • Electric Lift Gate, 4x32" wide • (10+/- Sets) **WESTERN** Snow Plow Shoes

EXMARK Lazer Zero Turn Mower, Kohler gas, hydrostatic, 60" deck • **DIXIE CHOPPER** XW2000 Zero Turn Mower, Kohler 20HP gas, hydrostatic, 60" cut • **(3) EXMARK** 52" Turf Tracer Walk Behind Mowers, Kawasaki 19HP gas, hydrostatic, with sulky electric start • **2001 FERRIS** 52" Walk Behind Mower, Kawasaki 17HP gas, hydrostatic, electric start • **FERRIS** 38" Walk Behind Mower, Kawasaki FC420V gas, belt drive, pull start

CARGO VAN, PICKUP AND SPORT UTILITY VEHICLE

2001 FORD E350 SD Cargo Van (Not Running-Electrical) • **1996 CHEVROLET** 3500, 4x4 Extended Cab Dually Pickup Truck • **2003 FORD** 4x4 Explorer 4-Door SUV

FORKLIFT AND FLOOR SWEEPER

2006 HYSTER S50FT Fortis, 5,000# Cushion Tired Forklift, s/n F187V08016D, 4 cylinder LP gas and shuttle trans, 189" 3-stage mast, 48" forks, power side shift, fingertip controls, and FOPS protection. In good condition. (Not Running-Needs Computer Board) • **2002 AMERICAN INCOLN** 6150 ALTO Ride-On Floor Sweeper, s/n 630761, Kubota LP gas and hydrostatic trans, main and side brooms and dump hopper. In good condition with good tires.



PORTABLE IMPACT CRUSHER AND SCREENING PLANTS



03 LIPPMANN 4800 IMPACT CRUSHER

2003 LIPPMANN 4800 Portable Impact Crusher, s/n 2003-12111, Cat C-12, 425HP dsl, Lippmann 4248LP horizontal shaft impactor, 47x16 VGF, 47"x16" vibrating feeder with 4" grizzly, 48" rear discharge conveyor, (2) 20" cross conveyors (1 missing belt), Honda 8HP auxiliary hydraulic power pack, tri-axle carrier with 11R22.5 tires. In good condition with good tires. (Belts Fair)

2006 POWERSCREEN 1800 Titan Crawler Screening Plant, s/n 12101333, Deutz dsl and hydraulic drive, 6'x16' double deck vibratory screen, 35" bolt feeder, 36" radial stacking discharge conveyor, 48" collecting conveyor, 48" tail conveyor, (2) 35" side discharge conveyors, removable catwalks, remote control, and 9.5' overall width. In good to very good condition with good to very good undercarriage.

1996 POWERSCREEN STD Chieftain Portable Screening Plant, s/n 5008144, Cummins dsl, feed hopper with hydraulic grizzly feeder, 36" charging conveyor, double deck vibratory screen, (2) 26" side discharge conveyors, 36" rear discharge conveyor, and 12R22.5 tires. In good condition with good tires.



06 POWERSCREEN 1800 TITAN

SERVICE AND ROLL-BACK TRUCKS



05 PETERBILT 357

sion, ac, power and heated mirrors, power windows, (3) stabilizers, 11R24.5 front and 12R24.5 rear tires. In good to very good condition with very good tires.

1995 (Glider) PETERBILT 379 Tandem Axle Roll-Back Truck, Cat 3406C, 425HP (reman) dsl and Eaton Fuller 13 speed trans, Jerr-Dan 815TRB 8'x26' steel roll-back body, Ramsey winch, 30,000# deck capacity, wheel lift/tow bar, 4,000# lift capacity with full extension, 12,000# tow capacity, hitch option, tow mount accessories, rear glad hands, air ride suspension, aluminum wheels, 2-stage brake, power and heated mirrors, 275/80R22.5 front and 255/70R22.5 rear tires. In very good condition with very good tires. (Previous Tractor; Built as Roll-Back 2 years Ago; Used Twice) (Approximately 5,000 Miles on Cat Reman)

1980 FORD 9000 Tandem Axle Roll-Back Truck, Detroit V-8 dsl and Roadranger RT-110, 10 speed trans, Jerr-Dan 26S15, 8'x26' roll-back body, s/n 6569 with bed mounted winch, 14,000# front and 38,000# rear axles, spring suspension, tow package with air, ac, 11R24.5 front and 295/75R22.5 rear tires. In good condition with good tires.

2005 PETERBILT 357 Single Axle Service Truck, Cat C-13 Acert, 400HP dsl and Eaton Fuller 10 speed trans, 14'6" service body, 1993 IMT 7025, 14,000# 16'4" - 25'4" 2-stage service crane, Miller Bobcat 225NT, 225 amp/8500 watt welder/generator, IMT hydraulic air compressor, 33,000# rear and 12,000# front axle, single frame, 3-stage Jake brake, 2-compartment lube tank with Graco pumps, hose reels, aluminum Budd wheels, air ride suspension, 11R24.5 front and 12R24.5 rear tires. In good condition with very good tires.



95 PETERBILT 379 ROLL-BACK

AERIAL LIFTS



(2) OF (7) 60' AERIAL LIFTS

platform, and 15x19.5 tires. In good condition with good tires.

1998 TEREX TB60, 60', s/n 98630272 (Upper Control Problems; Electric Problem) • **GROVE MX66BXT**, 60' Telescopic, s/n Unknown (No Upper Controls; Electric Problem)

(2) 1989 JLG 60H, 60' Telescopic, 4 cylinder LPG gas and hydrostatic trans, 4-wheel drive, 500" platform, and 14x17.5 tires. In good condition with good tires.

(2) 1997 SNORKEL ATB-A60RFO, 60' Telescopic, 4 cylinder LPG gas and hydrostatic trans, 4-wheel drive and 600# hydraulic positioning platform. In good condition with good tires.

1995 SNORKEL ATB-60ALCU, 60' Articulated Boom Aerial Lift, s/n 9511410495, Cummins dsl and hydrostatic trans, 4-wheel drive, 30"x92" 500# hydraulic positioning platform, and 15x19.5 tires. In good condition with good tires.

TRUCK TRACTORS AND LOWBOY TRAILERS



06 PETERBILT 379 AND 88 TRAILING 50 TON

3-stage brake, fiberglass fenders, aluminum wheels, heated mirrors, power windows, cruise control, ac, and 295/75R22.5 tires. In good to very good condition with good tires. (141,940 Original Miles)

1998 WESTERN STAR 4964FX T/A, Cat 3406, 475HP dsl and 8LL, 10 speed trans, 40,000# rear and 12,000# front axle, wetline, 212" wheelbase, air ride suspension, air slide 5th wheel, 3-stage brake, aluminum Budd wheels, power windows, cruise control, ac, plastic fenders. In good condition with good tires.

1990 PETERBILT 357 Tri-Axle, Cummins dsl and Eaton Fuller 18 speed trans, 44,000# rear, 20,000# lift and 12,000# front axle, wetline kit, double frame, air slide 5th wheel, air ride suspension, 3-stage brake rear tow package with air, power and heated mirrors, and 11R22.5 tires. In fair condition with good tires.

2000 PETERBILT Tri-Axle, wetline kit, double frame, air ride suspension, aluminum wheels and headache rack, 275" wheelbase, 237" BBC, and 12R22.5 tires.



86 TALBERT 75 TON DOUBLE DETACHABLE

1988 TRAILING 1552-4630, 50 Ton Tri-Axle Lowboy, non-ground bearing detachable gooseneck, gas pony motor, 22'6" x 8' deck, 12' open over wheels, flip up 3rd axle, air ride suspension, aluminum wheels, outriggers, chain dogs, and 255/70R22.5 tires. In good to very good condition with very good tires. (Totally Refurbished; Sandblast, Paint, New Deck, Axles, Hubs, and Brakes)

1988 TALBERT TD-35S-HRG-1, 35 Ton T/A Lowboy, hydraulic non-ground bearing gooseneck, 23'x8' level deck, spring suspension, open over wheels, outriggers, chain dogs, and 255/70R22.5 tires. In good condition with good to very good tires.

UTILITY TRACTORS AND ATTACHMENTS



94 JD 4960 4X4

dsl and 2 speed hydrostatic trans, Bobcat 8TL front loader attachment with universal skid steer mounting plate, 68" GP bucket, EROPS with ac and work lights, 3-point hitch, rear PTO, rear differential lock, 27x10.5x15 front and 43x6.00-20 rear tires. In very good condition with good tires. (282 Original Hours)

BOBCAT 3FM60, 60" Finish Mower, PTO driven, 3-point hitch

- **BOBCAT 60"** Grading Box, s/n A1FW00195, with scarifier kit
- **SXP60SRB**, 60" Soil Preparator, 3-point hitch

1994 JOHN DEERE 4960, 4x4 Utility Tractor, s/n RW4960P009626, JD 200HP dsl and 15 speed powershift trans, 4-spool hydraulics, 3-point hitch, rear PTO, EROPS with ac, dual rear wheels, front counterweights, 18.4R26 front and 20.8R42 rear tires. In good condition with good front and fair rear tires. (Approximately 100 Hours On Major In-Frame Rebuild)

2009 BOBCAT CT335B, 4x4 Utility Tractor, s/n ABH811198, Kubota 38HP



09 BOBCAT CT335B 4X4

BARK MULCH BLOWER, CHIPPER, AND HYDROSEEDER



05 FINN BB302

1998 VERMEER BC1230A Chipper, s/n 1VRN15173W1002100, Perkins dsl, 12" capacity disc chipper, Auto Feed II feed system, pintle tow, and electric brakes. In very good condition with very good tires. (236 Original Hours) (Spare Set of Knives)

BOWIE 800 Victor Portable Hydroseeder, s/n 80885863, Wisconsin gas, mounted on tandem axle carrier, with 7.00x15 tires. In fair to good condition with fair to good tires

2005 FINN BB302 Portable Bark Mulch Blower, s/n SDA-807, Kubota V1505, 33.5HP water cooled dsl, 150+/- Foot x 4" discharge hose with hose reel, radio remote control, 1.5 cubic yard feed hopper, Tuthill blower rated 500 CFM @ 10PSI, material delivery rated 10 cubic yard per hour, mounted on tandem axle carrier with pintle tow and 174/80D13 tires. In very good condition with good tires. (732 Original Hours)



98 VERMEER BC1230A (236 ORIGINAL HOURS)

MOTOR GRADERS



2006 CAT 140H, s/n CCA01968, Cat 3176 dsl and powershift trans, 12" all hydraulic moldboard, rear mounted ripper scarifier shanks, EROPS with ac, push block, and 17.5R25 tires. In good condition with fair to good tires.

'06 CAT 140H



2002 CAT 143H, s/n 1AL01318, Cat 3306 dsl and powershift trans, Sonic Master 2000 GPS system (no computer), 14" all hydraulic moldboard, rear ripper/scarifier with shanks, EROPS with ac, front push block, and 17.5x25L2 tires. In good condition with good rear and fair front tires.

'02 CAT 143H

CRAWLER AND RUBBER TIRED EXCAVATORS AND ATTACHMENTS



2004 CAT 321CL CR, s/n MCF00414, Cat 3066T dsl, 9'6" dipper stick with Geith mechanical thumb, hydraulic beyond, hydraulic quick coupler, 48" digging bucket, zero tail swing, 14'5" crawlers, and 31.5 TBG pads. In good condition with fair to good undercarriage.



'02 CAT 320CU



'05 CAT 308C-CR

2005 CAT 308C-CR, s/n KCX00785, Mitsubishi dsl, 7'4" dipper stick with mechanical thumb, hydraulic beyond, hydraulic quick coupler, 36" digging bucket, 7'6" backfill blade, zero tail swing, EROPS with ac, 9'6" crawlers, and 23.5" TBG pads. In good condition with good undercarriage.

Geith 48" Hydraulic Angle Clean-Up Bucket with (Fits 308C-CR)



'06 DAEWOO SOLAR 175LC-V

2006 CAT M318C Rubber Tired, s/n H2D00454, Cat 3056E dsl and hydrostatic trans, 9'2" dipper stick, hydraulic beyond, hydraulic quick coupler, 70" perforated clean-up bucket with hydraulic wrist attachment, 4-wheel drive, EROPS with ac, (4) hydraulic outriggers, and 10.00x20 tires. In good condition with good tires.

1988 GRADALL 660E Rubber Tired, s/n 0167401, Cummins 6BTA 5.9L dsl (upper), 64" cleanup bucket, 42" digging bucket, remote travel, mounted on Gradall GW-574-66RD, 6x4 carrier, s/n G016315, Cummins 6CT 8.3L dsl and Fuller 15 speed trans, 385/65R22.5 front and 11R22.5 rear tires. In good condition with good tires.

70" Perforated Hydraulic Angle Clean-Up Bucket (Fits Cat 321CL CR) • **2009 CAT H120CS Hydraulic Impact Hammer** • **REV DRILL 25 (PARTS ONLY)**



'06 CAT M318C

CRAWLER TRACTORS



'05 CAT D5G LGP

2005 CAT D5G LGP, s/n RKG01693, Cat 3046 dsl and hydrostatic trans, 6-way blade, EROPS with ac, rear hitch, and 26" SBG pads. In good condition with fair undercarriage.

2002 CAT D4G XL, s/n CFN00503, Cat 3046 dsl and hydrostatic trans, 6-way blade, OROPS, rear hitch, and 18" TBG pads. In good condition with fair undercarriage.

2005 CAT D4G LGP, s/n TLX00537, 6-way blade and OROPS. In good condition with good undercarriage.

1990 CAT D3C, s/n 5KG01441, Cat 3204 dsl and powershift trans, 6-way blade, EROPS with heat, rear hitch, and 16" pads. In good condition with good undercarriage.

1988 JOHN DEERE 450G Series IV, s/n T0450GF744102, JD 4045D/T dsl and powershift trans, 6-way blade, OROPS, 16" DBG pads, drawbar, and. In good condition with fair to poor undercarriage.



'02 CAT D4G XL

CRAWLER LOADERS



'87 CAT 935B AND CAT 941B

1987 CAT 935B, s/n 3DF00051, Cat 3204 dsl and powershift trans, GP bucket, EROPS with heat, and 14" TBG pads. In good condition with good to very good undercarriage.

CAT 941B, s/n 80H3879, Cat dsl and powershift trans, GP bucket, OROPS, and 14" DBG pads. In good condition with good undercarriage.

CAT 955K, s/n 85J3520, Cat dsl and powershift trans, GP bucket, semi-enclosed canopy, and 15" DBG pads. In fair condition with fair undercarriage.

TRACTOR LOADER EXTEND-A-HOES



**'05 CAT 420D IT 4X4 AND
'97 CASE 580SL 4X4**

2005 CAT 420D IT, 4x4, s/n BLN12609, Cat 3054C dsl and shuttle trans, 4 in 1 loader bucket, front hydraulics, front hydraulic quick coupler, rear Wain Roy wrist attachment with 36" digging bucket, EROPS with ac, 12.5x80-18 front and 19.5Lx24 rear tires. In good condition with fair and good tires.

1997 CASE 580 Super L Series II, 4x4, s/n JG0202975, Case dsl and shuttle trans, 24" backhoe bucket, EROPS with heat and ac, 12x16.5 front and 19.5L24 rear tires. In good condition with good tires.

1995 CASE 580 Super L, 4x4, s/n JJG0191725, Case 4T-390 dsl and shuttle trans, GP bucket, Geith 18" digging bucket, EROPS, and 12x16.5 front and 19.5Lx24 rear tires. In good condition with fair tires.

48" Cleanup Bucket (420D) • **18" Digging Bucket (420D)** • **12" Backhoe Bucket (Fits 580 Super L)** • **ATLAS COPCO PB420 Hydraulic Hammer Attachment (Backhoe)** • **STANLEY BH8000 Hydraulic Plate Compactor (Backhoe)**



'95 CASE 580SL 4X4

ASPHALT PAVERS AND ROLLERS



2004 IR-BLAW KNOX PF3120 Crawler Asphalt Paver, s/n 180856, Kubota dsl and hydrostatic trans, Liberty 8'-15' hydraulic extendable screed, s/n L3000-158, auto slope and grade, sonic feed sensors, (2) remotes, and steel crawlers with poly street pads. In good condition with good undercarriage.

1988 BLAW-KNOX PF500 Crawler Paver, s/n 50017-16, Deere 6414D dsl and hydrostatic trans, 10'-18' heated vibratory screed, auto slope and grade controls, washdown system, dual

04 IR-BLAW KNOX PF3120

operator controls, 11'6" crawlers, and 18" street pads. In good condition with good undercarriage.

MAULDIN 550E Crawler Paver, s/n Unknown, Kohler gas, 8' heated screed with 24" hydraulic strikeoffs. In fair to good condition.

2008 BOMAG BW151AD-4AM Vibratory Tandem Roller, s/n 101920271010, Deutz dsl and hydrostatic trans, 66" smooth drum with hydraulic edge compaction roller and cutter wheel, Asphalt Management automated compaction control system with e-vibe, 2-frequency vibration, front and rear spray systems, EROPS, and work lights. In Excellent condition. **(13.5 Original Hours)**



08 BOMAG BW151AD-4AM
(13 ORIGINAL HOURS)



00 CAT CB534C

2000 CAT CB534C Vibratory Roller, s/n 5HN00629, Cat 3054 dsl and hydrostatic trans, 67" smooth drums, dual drum drive, water system, multi-position and operator station. In good condition.

2000 CAT CB214D Vibratory Tandem Asphalt Roller, s/n ITZ00281, Cat 3013 dsl and hydrostatic trans, 39" smooth drums and roll-bar. In very good condition. **(358 Original Hours)**



00 CAT CB214D

1992 INGERSOLL-RAND DD65 Tandem Vibratory Asphalt Roller, s/n 5534SEG, Deutz dsl and hydrostatic trans, 55" smooth drums, 2-frequency vibration, and vibration drum selector. In good condition. **(01,424 Original Hours)**

1988 EAGER BEAVER SRH300 Tandem Roller, s/n 300SRH880010, Wisconsin 2 cylinder gas and hydrostatic trans, 38" split front drum, 40" rear drums, water system, and 4,200# weight. In fair to good condition.



92 IR DD65

DYNAPAC 2100E Tandem Roller, s/n 81033, Briggs & Stratton 11HP gas and hydrostatic trans, 30" split front drum, 38" rear drums, and water system. In fair to good condition.

2007 WACKER RD12A Vibratory Tandem Roller, s/n 5752431, Honda GX610, 18HP gas and hydrostatic trans, 35.5" smooth drums, water system, front and rear spray. In good condition.

VIBRATORY COMPACTORS



2005 CAT CS-563E, s/n CNG00983, Cat 3054E dsl and hydrostatic trans, 84" smooth drum, drum drive, OROPS, and 18x26 tires. In good condition with fair to good tires.

2004 CAT CP-433E Padfoot, s/n ASN00228, Cat 3054C dsl and hydrostatic trans, 66" padfoot drum, bolt-on smooth shell drum kit, 83" leveling blade, OROPS, and 14.9x24 tires. In good condition with good tires.

MINI EXCAVATORS, SKID STEER LOADERS, AND ATTACHMENTS

2008 BOBCAT 435H-G Series Mini Excavator, s/n AACD11043, Kubota 49HP dsl and 2-speed hydraulic drive, 4'6" dipper stick with hydraulic beyond, swing boom, 24" bucket, 76" backfill blade, EROPS with ac, and 16" rubber tracks. In very good condition with very good undercarriage. **(109 Original Hours)**



02 CAT 302.5

2002 CAT 302.5 Mini Excavator, s/n 4AZ03973, Cat 3013 dsl and hydraulic drive, 4'8" dipper stick with hydraulic beyond, swing boom, 24" digging bucket, backfill blade, OROPS, and 12"x6'3" rubber tracks. In good condition with good undercarriage.

YANMAR B50-2 Mini Excavator, s/n 22651B, Yanmar 4 cylinder dsl and hydraulic drive, 5'4" dipper stick, swing boom, 24" digging bucket, backfill blade, canopy, and

15"x7'10" rubber tracks. In fair to good condition with good undercarriage.

2008 BOBCAT S330 Skid Steer Loader, s/n A02040209, Kubota dsl and 2 speed hydrostatic trans, 80" GP bucket, Power Bob-Tach coupler, hi-flow hydraulics, selectable joystick controls, radio remote control ready, EROPS with ac, and McLaren Nu-Air 36.5x14-20 cushion/solid tires. In very good condition with very good tires. **(686 Original Hours)**



08 AND 06 BOBCAT T300'S

good condition with good undercarriage. **(1,397 Original Hours)**



08 BOBCAT 435H-G



08 BOBCAT S330

2005 CAT 277B Crawler Skid Steer Loader, s/n MDH02791, Cat dsl and hydrostatic trans, hydraulic 4-in-1 bucket, EROPS, and 18" rubber tracks. In good condition with good undercarriage.

2005 CAT 262B Crawler Skid Steer Loader, s/n PDT01568, OROPS • **2005 TAKEUCHI TL140 Crawler Skid Steer Loader**, s/n 21402039, OROPS



09 BOBCAT S220

Kubota dsl and hydrostatic trans, 67" GP bucket, auxiliary hydraulics, EROPS with heat, and 10-16.5 tires. In good condition with very good tires.

1994 BOBCAT 763C Skid Steer Loader, s/n 512212112, Kubota dsl and hydrostatic trans, 67" GP bucket, auxiliary hydraulics, OROPS, and 10x16.5 tires. In good condition with good tires.

1992 BOBCAT 853H Skid Steer Loader, s/n 510375007, dsl and hydrostatic trans, 66" GP bucket, hi-flow hydraulics, OROPS, and 12x16.5 tires. In fair condition with poor tires.

BRADCO 611 Backhoe Attachment • **GLENMAC M-6, 6' Hydraulic Soil Conditioner**, skid steer quick disconnect mount and transport wheels • **48" Fork Attachment (Fits T300)** • **UNUSED VERSATECH Skid Steer Attachments: (4 Sets) 48" Pallet Forks** • **(2) Fork Frame Attachments** • **78" Snow and Mulch Bucket** • **72" Rock Bucket** • **60", 66", and 72" GP buckets** • **Stump Bucket and (2) Grapple Buckets** • **(2) Hay Spear Attachments** • **(4) Quick Tach Mounting Plates** • **UNUSED VERSATECH Excalibur X36 Thumb Attachment (Fits Mini Excavators)** • **GROUSER PRODUCTS 72" Quick Attach Blade (Skid Steer)** • **BOBCAT 30C Hydraulic Post Hole Auger**, with 12" and 36" auger bits • **12" and 18" Digging Buckets (Fits 435H-G)**



05 CAT 277B

2009 BOBCAT S220 Skid Steer Loader, s/n A5GK35182, Kubota dsl and hydrostatic trans, 72" light material bucket, standard auxiliary hydraulics, OROPS, and 12x16.5 tires. In good condition with fair tires. **(820 Original Hours)**

1996 BOBCAT 763C Skid Steer Loader, s/n 512217227,



96 AND 94 BOBCAT 763C

TRI-AXLE ROLL-OFF TRUCKS



(3) '06 KENWORTH T800 ROLL-OFF TRUCKS

cruise control, power windows and locks, 385/65R22.5 front and 11R24.5 rear tires. In good condition with good tires.

2006 KENWORTH T800 Tri Axle, Cat C-13, 430HP Acert dsl and Eaton Fuller RT016980LL, 10 speed trans, 2005 American ARE-75-22-XT, 75,000# roll-off hoist, s/n N-5-5156, 22' rail with hydraulic extension, 18,740# front and 52,000# rear axles, 18,740# airlift steerable 3rd axle with 385/65R22.5 tires, 3-stage brake, aluminum disc wheels, ac, cruise control, power windows and locks, 385/65R22.5 front and 11R24.5 rear tires. In good condition with good tires.

2004 KENWORTH T800 Tri Axle, Cat C-13, 335HP dsl and Eaton Fuller RT016908LL, 10 speed trans, 2004 American ARU-75-22-XT, 75,000# roll-off hoist, s/n M-1-4324, with electric tarp kit, 18,000# front and 46,000# rear axles, 20,000# airlift 3rd axle with 11R24.5 tires, 3-stage brake, aluminum disc wheels, ac, heated mirrors, cruise control, 385/65R22.5 front and 12R24.5 rear tires. In good condition with fair tires.

2006 KENWORTH T800 Tri-Axle, Cat C-13, 430HP Acert dsl and Eaton Fuller RT016980LL, 10 speed trans, 2005 American ARE-75-22-XT, 75,000# roll-off hoist, s/n N-5-5138, 22' rail with hydraulic extension, 52,000# rears, 18,740# front and 18,740# airlift steerable 3rd axle, 3-stage brake, aluminum disc wheels, ac,

DUMP TRUCKS

(2) 2006 WESTERN STAR 4964 Tri Axles, Cat C-15, 475HP dsl and Eaton Fuller 8LL, 10 speed trans, Beau-Roc 18' steel dump body with electric tarp kit and air operated tailgate, 19,840# front and 46,000# rear axles, 20,000# airlift steerable 3rd axle with 385/65R22.5 tires, 3-stage brake, aluminum disc wheels, cruise control, ac, power passenger window, heated mirrors, 385/65R22.5 front and 11R24.5 rear tires. In good condition with good tires.



'06 WESTERN STAR 4964'S

2004 VOLVO VHD Tri-Axle, Volvo VED12-465, 465HP dsl and Eaton Fuller RT0-16908LL, 10 speed trans, Beau-Rock 176" steel heated dump body with air gate and power tarp, 46,000# rears and 20,000# front axle, 2-stage brake, spring suspension, aluminum wheels, air seat, ac, and 385/65R22.6 front and lift and 11R24.5 rear tires. In good condition with fair tires.



'04 VOLVO VHD

1990 GMC Top Kick 7000 S/A, Cat 3208, 215HP dsl and auto trans, 10' steel dump body with electric tarp, Valk 12' plow with power angle, hydraulic tailgate spreader, central hydraulics with controls, and 11R22.5 tires. In good condition with good tires.

1994 CHEVROLET 3500, 4x4, V-8 gas and auto trans, Thiele 8' dump body, Flink hydraulic tailgate spreader, central hydraulics, Boss plow frame (only), dual rear wheels, and 235/85R16 tires. In fair to good condition with fair to good tires.

1995 FORD F-450XL Super Duty S/A Dump Truck, gas and 5 speed trans, 8' steel dump body with single chute and tarp kit, Western 8' hydraulic angle snowplow, dual fuel tanks, and 235/85R16 tires. In fair to good condition with good tires. (Dump Hoist Not Working)

FORD L900 S/A, Cat 3208 dsl and 5 speed trans with 2 speed rear, 10' steel dump body with tarp kit, Temple 8' spreader with gate, pintle hitch, rear electric hookup, spoke wheels, and 11.00R20 tires. In fair condition with fair tires.

FORD LN8000 S/A, Cat 3208 dsl and 5 speed trans with 2 speed rear, Heil 9' steel dump body with tarp kit, 8' spreader with gate, air brakes, pintle hitch, spoke wheels, and 11R22.5 tires. In fair to good condition with fair tires.

1987 MACK CS250P Pusher Axle, Scania 6 cylinder dsl and 10 speed trans, 12'6" steel dump body with power tarp, airlift 2nd axle, tow package with air, and 11R22.5 tires. In good condition with good tires.

BOOM TRUCKS AND ROUGH TERRAIN CRANE



NATIONAL 800C, 21 Ton, s/n 27674, 24.5 to 80' 4-section hydraulic boom, 24.5' to 43' telescopic jib, McKissick 7 ton ball, dual operators stations, (4) hydraulic outriggers, mounted on 1997 Volvo WG64 Tri-Axle Flatbed Truck, Cat 3306C, 300HP dsl and Fuller RTX11708LL, 10 speed trans, 22'6" steel flatbed with ratchet tie-downs, 425/65R22.5 front, 295/75R22.5 lift, and 12R22.5 rear tires. In good condition with good tires.

NATIONAL 21 TON

PITMAN HC18T85, 18 Ton, s/n 89004, 58' 3-stage hydraulic boom with 12 ton weighted hook, (4) hydraulic outriggers and dual operator stations, mounted on 1988 Peterbilt 357 Tandem Axle Flatbed Truck, Cat 3406B, 425HP dsl and Fuller Roadranger 8LL, 10 speed trans, 25' flatbed, double framed, 2-stage Jake brake, tow package with electric, aluminum Budd wheels, and 11R24.5 tires. In good condition with good tires.



PITMAN 18 TON

GALION 150A, 15 Ton Rough Terrain Crane, s/n 1404529 (from records), Detroit 4-53 dsl and shuttle trans, 4-section hydraulic boom, single hoist, single sheave hook block, (4) hydraulic outriggers, and 17.5x25 tires. In fair to good condition with very good tires.

WATER AND FLATBED TRUCKS



'86 INT'L 3,000 GALLON

1986 INT'L F2275 T/A Water Truck, Cummins NTC350, 350HP dsl and Fuller Roadranger 10 speed trans, approximately 3,000 gallon water tank, fire hose nozzle, (2) water hose nozzles, 3-stage brake, ac, and 11R24.5 tires. In good condition with good tires.

1988 INTERNATIONAL 1954 S/A Axle Flatbed/Dump Truck, Int'l DT466 dsl and 5 speed trans with 2 speed rear, 12' steel stake-bed with tie downs, 1,200 gallon poly water tank, under bed storage box, Williams exhaust brake, pintle hitch, rear electric hookup, spoke wheels, and 11.00R20 tires. In fair condition with good tires.

1997 UD Cab Over Flatbed Truck, Dsl and 5 speed trans, 14'6" flatbed with stake pockets, over cab material rack, dually. In fair to poor conditioning. (Bad Trans)

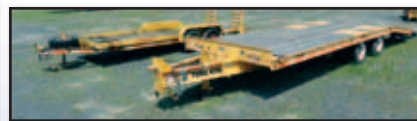
DUMP TRAILER



'07 MAC 23'

2007 MAC Mac'Simizer 23' Frameless Aluminum Half Round T/A Dump Trailer, 3/8" poly liners, Shur-Trak power tarp and bows, air tailgate, air ride suspension, aluminum Budd wheels, axle rating-23,000#, GVWR-80,000#, and 11R22.5 tires. In very good condition with good tires.

TAG-A-LONG, VAN, TOOL STORAGE, AND OFFICE TRAILERS



'00 TRAIL KING 20 TON AND '05 SUPERLINE 8,000#

2000 TRAIL KING TK40LP, 20 Ton T/A Tag-A-Long, 8'6"x20' level deck, 6' beavertail, 6' ramps, chain dogs, air brakes, and 215/75R17.5 tires. In good to very good condition with good tires.

1986 EAGER BEAVER 20HA, 20 Ton T/A Tag-A-Long, 17' load deck, 5'6" beavertail, 5' ramps, air brakes, tie downs, and 8.25R15 tires. In good condition with good tires.

1986 EAGER BEAVER 20 Ton T/A Tag-A-Long, 17' level deck, 8' width, 5' beavertail, 4'6" ramps, tie downs, and 8.25R15 tires. In fair condition with good tires.

2005 SUPERLINE BW4T182HD, 8,000# T/A Tag-A-Long • **2005 PACE JT612, 6x12 Enclosed Van Trailer** • **COAST 8'x32' T/A Office Trailer** • **8'x24' T/A Tool Storage**

DRI-PRIME AND CENTRIFUGAL PUMPS AND PORTABLE AIR COMPRESSORS

GODWIN CD200, 8" Portable Dri-Prime Pump, s/n 924581-1, JD dsl, hose rack, tool basket, and 225/70R15 tires. In good condition with good tires • **BARNES NS200CCD, 10"x10" Skid Mounted Centrifugal Pump**, s/n 27977-187, Detroit 3-53 dsl, 3,000 GPM @ 80 TH. In good condition.

IR 130 CFM, s/n BD-B68539, Deutz dsl • **MULTIQUIP DPS90SST, 90 CFM**, s/n 3621988, Isuzu dsl • **1988 GARDNER DENVER D0125PR1A, 125 CFM**, s/n R88645, Perkins dsl, 100 PSI • **1988 GARDNER DENVER D0125PR1A, 125 CFM**, s/n R88640, Perkins dsl, 100 PSI • **ATLAS COPCO XAS175JD, 175 CFM**, s/n HOL620059, JD dsl